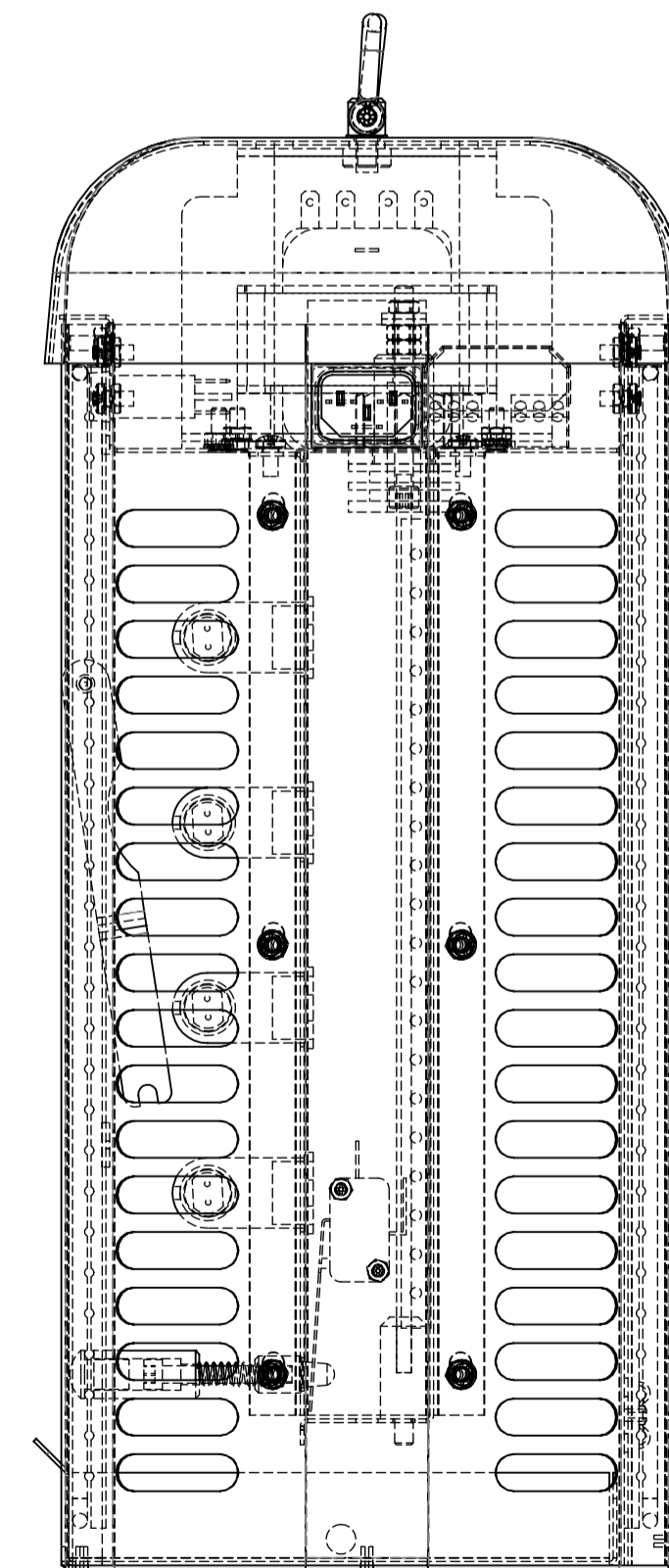
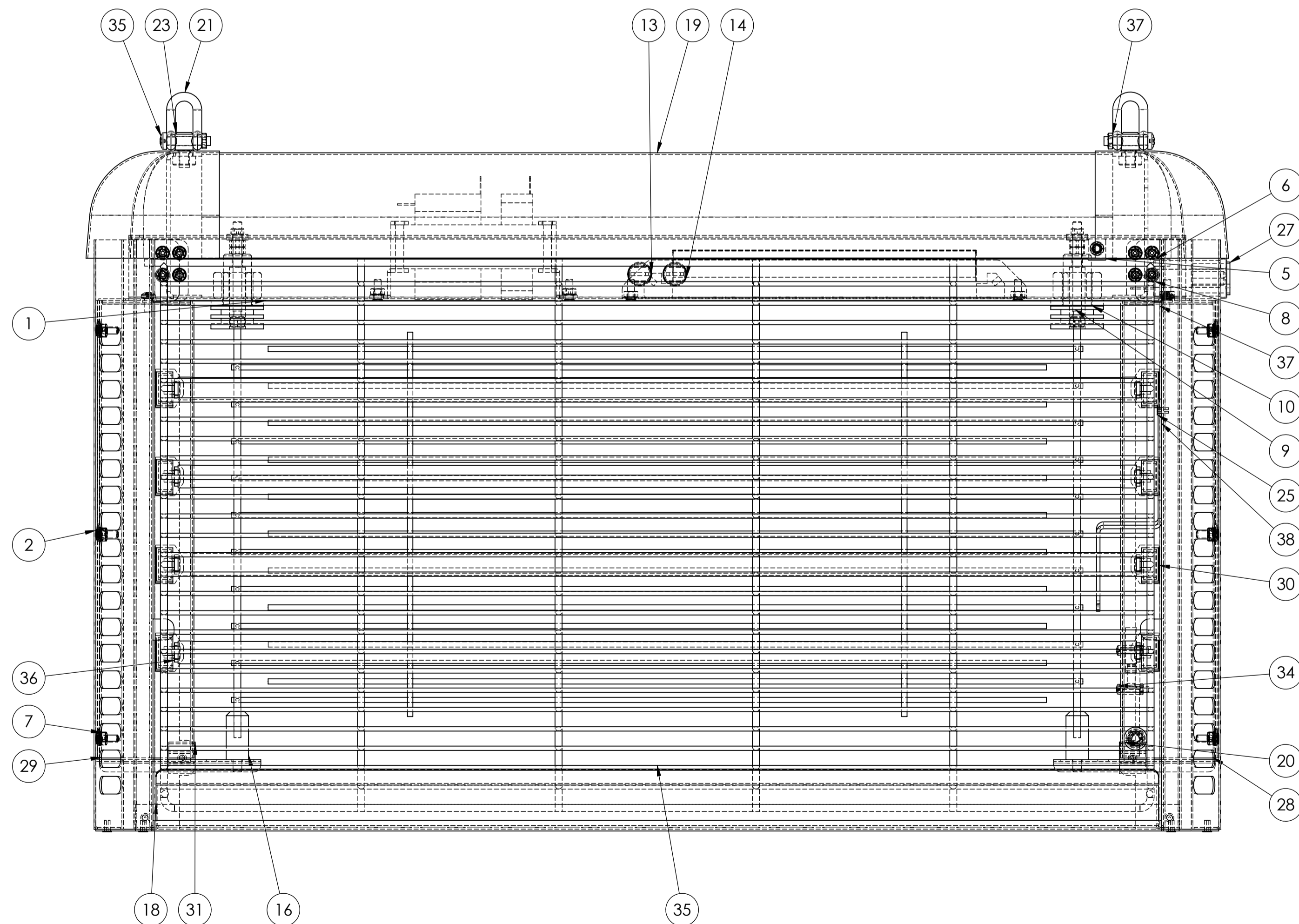
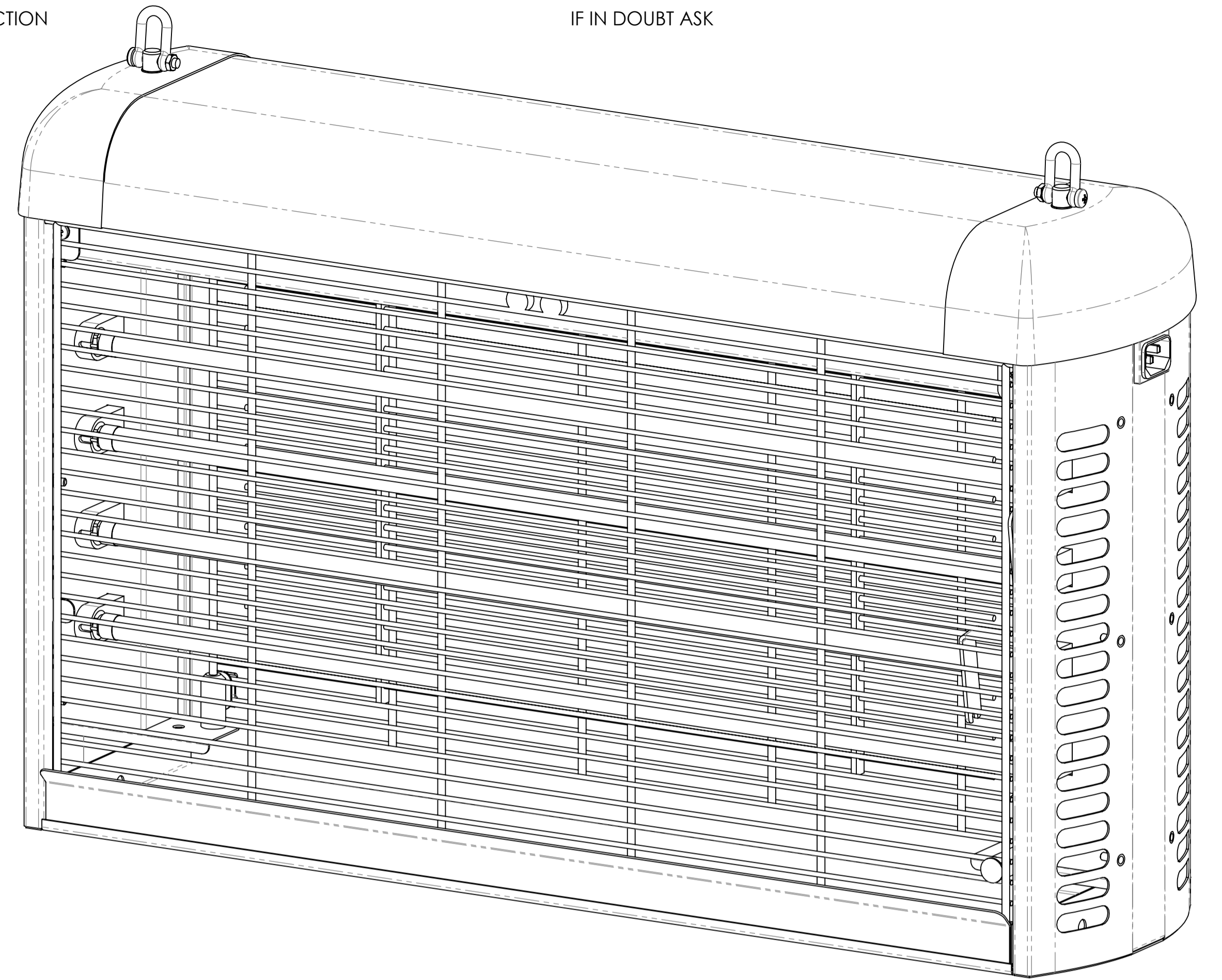
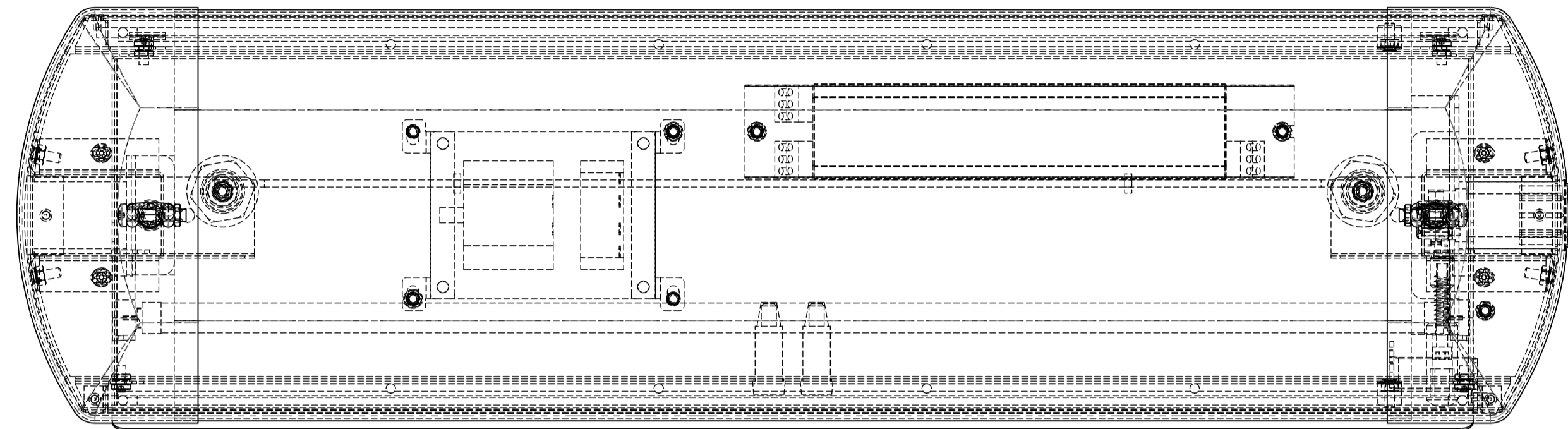


THIRD ANGLE PROJECTION

IF IN DOUBT ASK



ITEM NO.	PART NUMBER	Revision 3/QTY.
1	Chassis Spotweld Assembly	1
2	Frame Assembly	1
3	Well Transformer Retro Fit	1
4	Electronic Ballast 14 W	1
5	Guard Earth Spring	2
6	DIN 6797-J4.3	32
7	M4 Nylock Nut	21
8	ISO 7045 - M4 x 8 - 7 --- 8N	8
9	EHT Insulator Assembly	2
10	M16 nylon washer	2
11	M16 Nylon Nut	2
12	M5 Plain Washer	4
13	Neon 6.4 tag Red	1
14	Neon 6.4 tag Amber	1
15	Microswitch Zippy Corporation	1
16	Killing grid Assembly	1
18	Tray	1
19	Top Cover Assembly	1
20	Actuator Assembly	1
21	M5 D Shackle	2
23	Suspension Bolt	2
25	Pop Rivet Dia 3.2 x 6mm	1
26	Wall Plate	1
27	SCHAFFNER FILTER IEC	1
28	Right Channel	1
29	Left Channel	1
30	Lampholder 26-620-2012	8
31	Guard Securing Bracket	2
33	M4 x 12 Pozzi Pan Head Screw	4
34	M3 x 16 Pozzi Pan Head Screw	2
35	M5 x 25 Pozzi Pan Head Screw	2
36	M3 Nylock Nut	2
37	M5 Nylock Nut	2
38	Guard	2
39	T5-14W Lamp	5
39	PEM CLS-M4-0 ---N	4
39	Stay	1
39	3.2dia pop rivet	2
40	JIS B 1255 A 6	2

ENG.	ML	DO NOT SCALE DRG DIMENSIONS IN M.M.	MATERIAL	N/A
DRN	ML	TOLERANCES UNLESS OTHERWISE STATED	FINISH	N/A
CHKD		X. = 0.8 X.XX = 0.15 X.X = 0.4 X.XXX = 0.05	SCALE:-	1:2
APPD				

KILLGERM GROUP LTD.

FOR EXPLANATION OF DIMMENSIONS, NOTES, SYMBOLS, ETC., SEE B.S.308

REMOVE ALL BURRS AND SHARP EDGES, INTERNAL BEND RADII = MATERIAL THICKNESS UNLESS OTHERWISE STATED

ORIGINAL	25/05/13	1	GENERAL ARRANGEMENT	DRAWING NO. EFK56/001/D
RECORD No.	DATE	ISSUE		SHEET 1 OF 2